

HOIST / PEOPLE & MATERIAL

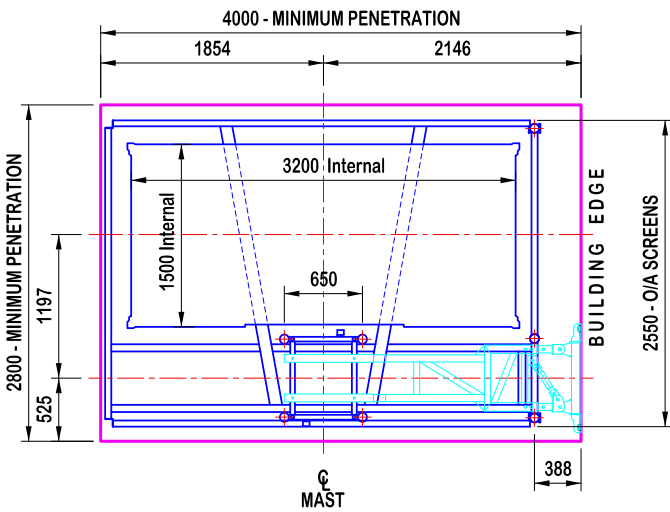
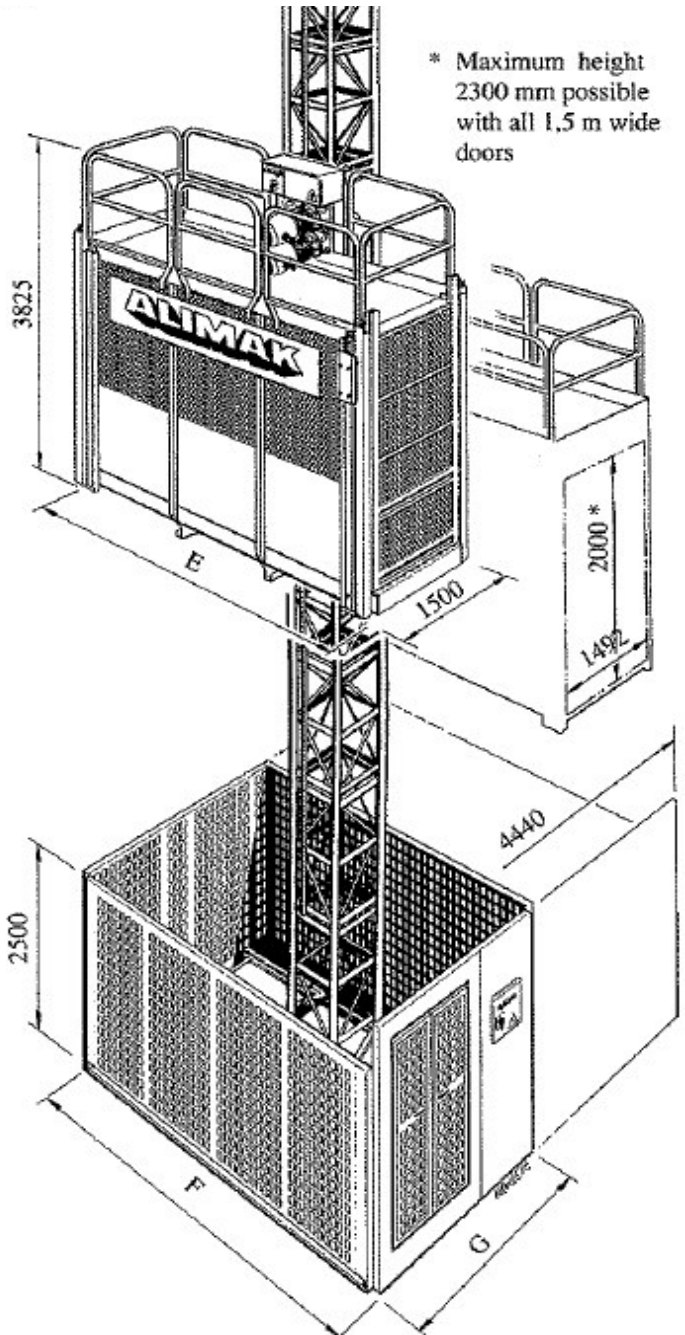
650

ALIMAK

Our five Alimak 650s offer great versatility for mid-rise projects. With 2.5t capacity and a 3.2m car, these mid-speed hoists move at 60m per second and can be set up as a twin or single hoist. We used two of these on Utopia Space in Fortitude Valley, as well as The View, The Lanes and Ipswich City Council Building.

SPECIFICATIONS

Max capacity	2.5 t
Car length	3.2 m
Max speed	60 m/min



CAPACITY	
Payload capacity	2500 kg
Erection load	1000 kg
Speed	0 - 65 m/min
Maximum lifting height (single car)	200 metres
Maximum lifting height (two car)	200 metres
CAR DIMENSIONS	
Width	1.5 m
Length	3.2 m
Height	2.3 m
Door opening (w x h)	1.492 m x 2.0 m

ELECTRICAL DATA	
Power supply	400 V / 50 Hz / 3 phase
Power supply fuses	125 A / car
Starting current	110 kW (3 x 11 kW triple motor)
Power consumption	66 kVa
WEIGHTS	
Cage (incl. drive system)	2550 kg / car
Mast Section (2 racks)	135 kg
MAST SECTION DIMENSIONS	
Centre to centre	650 mm x 650 mm
Length	1508 mm