

CRANE / LUFFING

750

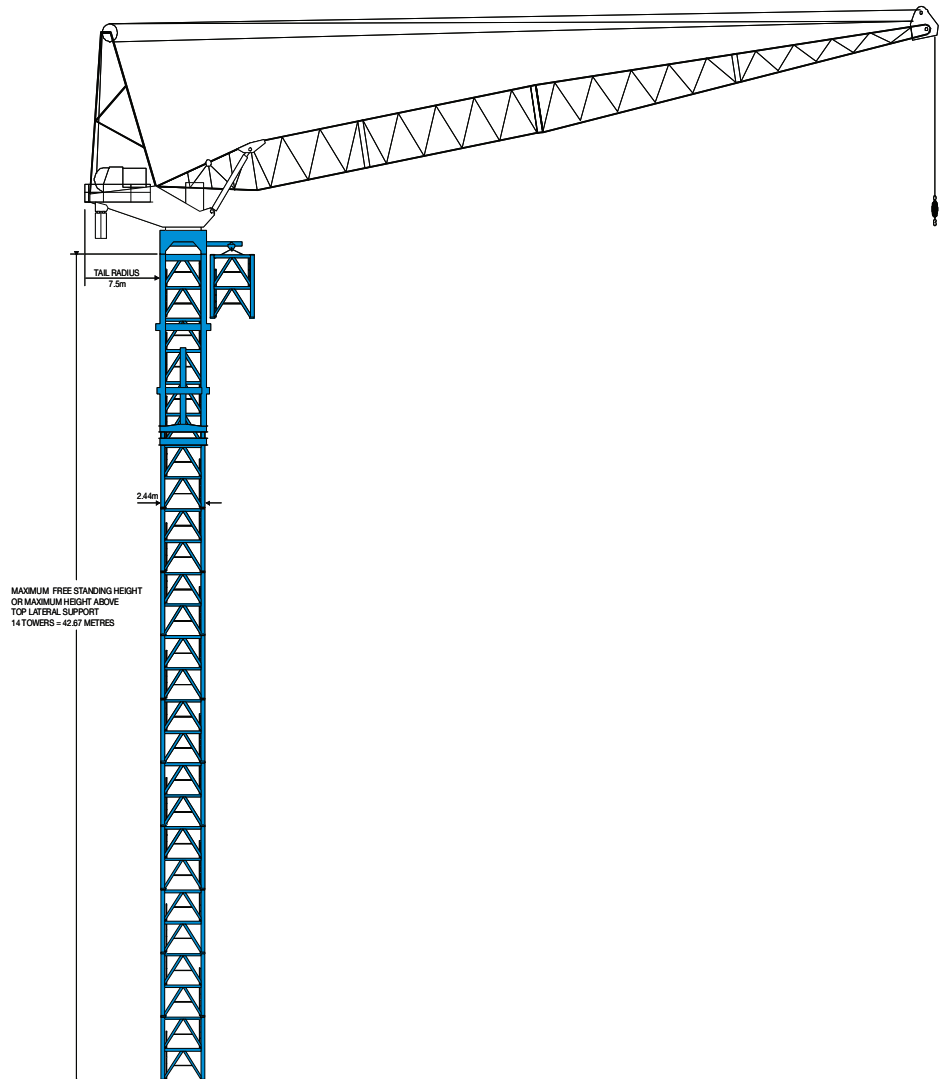
FAVELLE FAVCO

The Favelle Favco 750 diesel luffing cranes have a maximum boom length of 48.3m and a radius of 45m. They are fully compliant with legislated safety requirements.

SPECIFICATIONS

Max jib length	48.3 m
Max radius	45 m
Capacity at max length	2.23 t
Max capacity	24 t
Engine type	Diesel

WEIGHT MAX	RADIUS MAX	32.6 m	41.9 m	48.3 m
24.00 t	3.6 m	24.00 t	24.00 t	
21.00 t	4.5 m	21.00 t	21.00 t	
19.50 t	5.2 m	19.50 t	19.50 t	
18.00 t	6.1 m	18.00 t	18.00 t	
16.50 t	7.6 m	16.50 t	16.50 t	
15.00 t	9.9 m	15.00 t	15.00 t	
13.50 t	12.2 m	13.50 t	13.50 t	
12.00 t	15.2 m	12.00 t	12.00 t	12.00 t
12.00 t	16.7 m		12.00 t	
12.00 t	17.3 m	12.00 t		
10.50 t	19.8 m		10.50 t	
10.50 t	20.7 m	10.50 t		
7.50 t	21.3 m			7.50 t
9.00 t	22.8 m		9.00 t	
9.00 t	24.3 m	9.00 t		
8.50 t	25.9 m	8.50 t		
7.50 t	26.8 m		7.50 t	
5.50 t	27.4 m			5.50 t
7.50 t	28.3 m	7.50 t		
7.00 t	30.5 m	7.00 t		
6.00 t	32.0 m		6.00 t	
4.00 t	33.5 m			4.00 t
4.50 t	39.6		4.50 t	3.00 t
2.23 t	45.7			2.23 t



NOTES ON DOUBLE FALL

- Double fall capacities are shown in shaded area
- Double fall capability available on 32.6m and 41.9m booms only
- Double fall radius is not to exceed 15.2m
- 48.3m boom available in single fall only

NOTES ON SINGLE FALL

- Maximum capacity for radii less than 15.2m is not to exceed 12t
- All capacity charts are based on 60m of 32mm rope below the jib head
- Any additional rope weight to be deducted from load
- Rope weight = 400kg / 100m